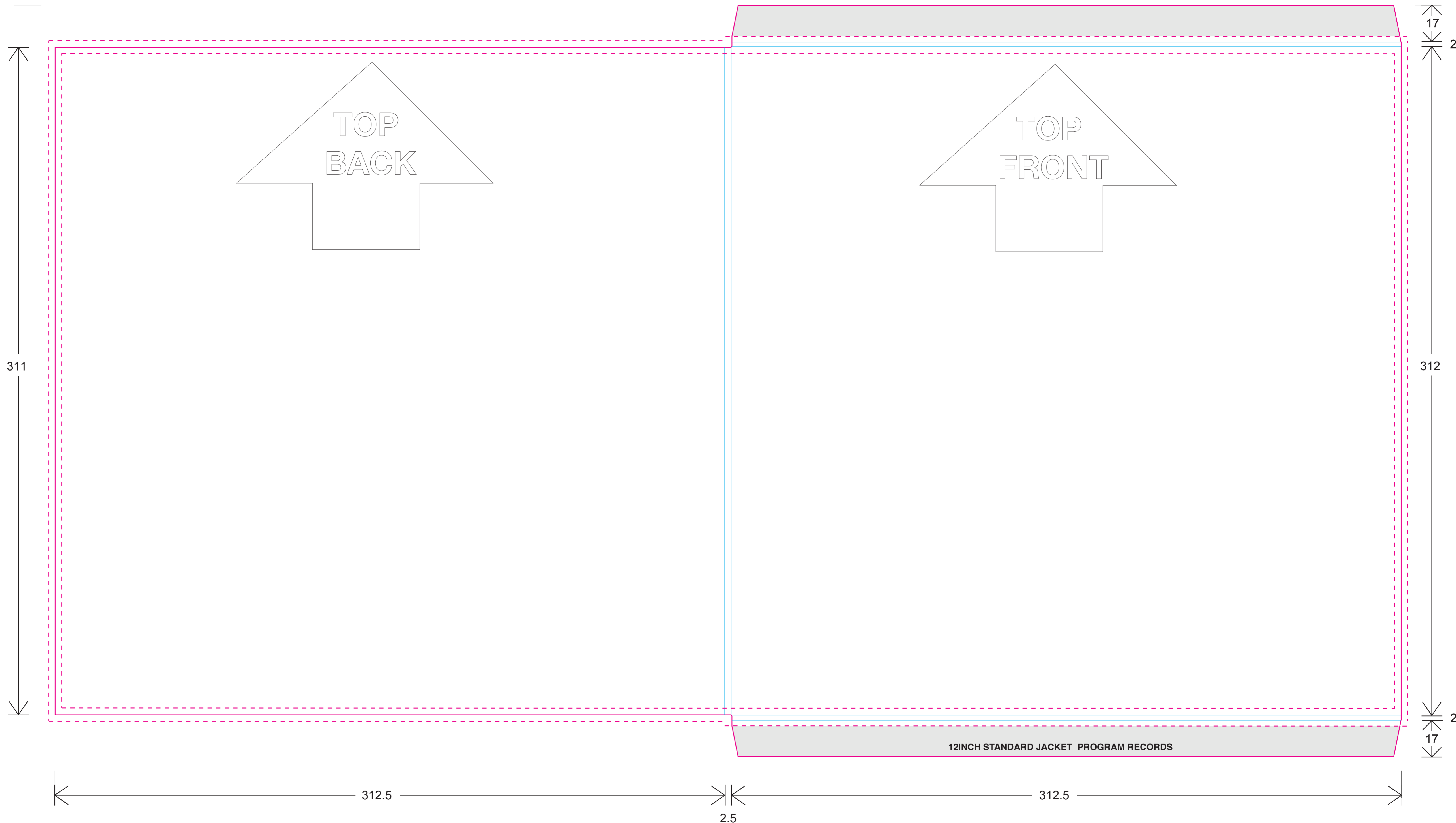




Outer dotted line is bleed, extend all background images to this line.  
Middle solid line is cut line, this is where the art will be cut.  
Inner dotted line is safety margin, keep all important elements within this line.  
Blue lines are "Creases".  
GREY AREA IS NON-IMAGE AREA - GLUE FLAPS.

FINAL ARTWORK MUST BE SUPPLIED WITH THE TEMPLATE LEFT ON THE TOP LAYER



\* ALL GUIDES AND INSTRUCTIONS - WILL NOT PRINT